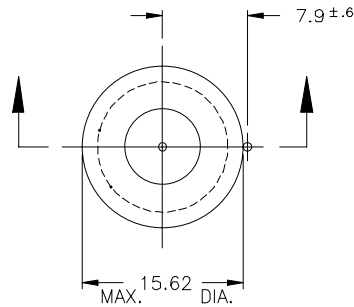


# Part No: T08-2009 – T08 Series Tilt Switch - Mercury

# DURAKOOL

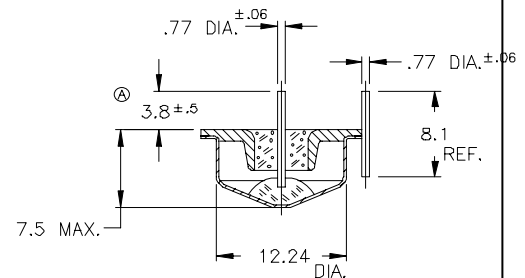
## Features:

- \* Un-Insulated
- \* Form: NC/SPST/Vertical Mount as Shown
- \* Angles Referenced from Vertical
- \* Omni-Directional
- \* Dual Electrode
- \* Hermetically Sealed
- \* Small Package Size
- \* High Current Capability
- \* Low Contact Resistance
- \* Long Life



## Dimensions in inches

Tilt switches "make" when the electrode is tilted below horizontal and "break" when tilted above the horizontal. Total travel from "make" to "break" is the "Maximum included angle" shown below. The component to which the switch is attached must have a total tilt angle greater than the "Maximum included angle" for proper operation.



|   |   |
|---|---|
| Must Break / Make Angle * :                     | 33° Break / 12° Re-Make   |
| Maximum included Angle:                         | N/A   |
|   | * Make/break angles are electrode + (above) / - (below) 0° horizontal reference |
| <b>Switch Ratings:</b>                          |   |
| Max Switching Voltage                           | 220V 60Hz   |
| Max Switching Current                           | 1.7A / 120V 60Hz; 0.75A / 220VAC ; 1A / 12VDC                                   |
| Initial Contact Resistance (Max).               | 5 Ohms max (10mA at 5VDC)   |
| Stand Off Voltage (contact to contact)          | 1240 V  |
| Operating Temperature                           | -38° to 220° F / -38° to 105° C   |
| Storage Temperature                             | -40° to 356° F / -40° to 180° C   |
| Typical number of operations at specified load  | 10,000,000  |
| G-Force Activation G-Level/Range                | N/A   |
| <b>Dimensions:</b>                              |   |
| Weight per 100pcs. Lbs / Kgs:                   | 0.77 / 0.35   |
| Body Length (less leads). Inches / Millimeters: | 0.615 / 7.5   |
| Maximum Diameter. Inches / Millimeters:         | 0.295 / 15.62   |
| <b>Materials:</b>                               |   |
| Lead Wire Type                                  | N/A   |
| Lead wire length/skive/termination              | N/A   |
| Finish:   | Tin   |



© American Electronic Components Inc 2006

Specifications are subject to change without notice. E&OE.

American Electronic Components Inc.,  
1101 Lafayette Street, Elkhart, Indiana. USA  
Tel: +1-574-295-6330 Fax: +1-574-293-8013  
Email: [sales@aecsensors.com](mailto:sales@aecsensors.com)  
<http://www.aecsensors.com>

T08-2009 210806